

PLAN MODEL:

Foxwood



COSTA MAISON



REFINED MODERN FARMHOUSE FOR LAKEFRONT ESTATE LIVING

Foxwood blends traditional farmhouse warmth with modern design sensibility — creating an inviting, spacious home ideal for families, gatherings, or serene lakeside retreats. This two-story plan features a generous open-concept layout that flows seamlessly from the entry through living spaces and into a large kitchen and casual dining area. With multiple bedrooms, versatile living zones, and classic farmhouse charm, Foxwood offers comfort, flexibility, and timeless style. From vaulted ceilings in the great room to a cozy covered porch and practical design touches throughout, Foxwood is built with purpose — designed to feel like home whether you're relaxing with family, entertaining guests, or enjoying quiet moments by the water. Natural light, functional flow, and thoughtful finishes come together to make this home both beautiful and livable.

FOXWOOD

3,235 SQ.FT.

5 BEDS

3.5 BATHS

OPEN-CONCEPT DESIGN

STYLISH GOURMET KITCHEN

3-CAR GARAGE

COVERED OUTDOOR LIVING

BUILD ON YOUR LOT OR OURS!

CONTACT US



(813) 551-3500



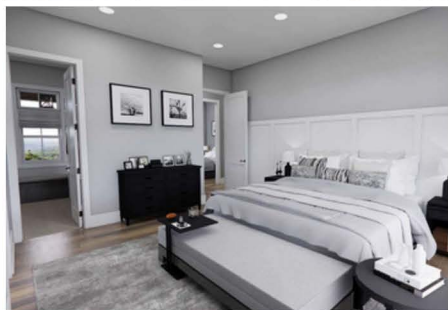
info@costamaison.com

PLAN MODEL:

Foxwood



COSTA MAISON



THE ADVANTAGES OF CHOOSING A PRE-DESIGNED COSTA MAISON HOME

Building your dream home with a Costa Maison plan allows you to enjoy the perfect balance of customization, efficiency, and luxury. Our plans are thoughtfully crafted with meticulous attention to detail, high-end finishes, and layouts designed for modern, sophisticated living. Designed specifically for estate-style lots, these homes maximize lakefront views, outdoor living potential, and the serene natural setting—creating a residence that feels timeless, connected to nature, and truly one-of-a-kind.

Want to see more?

View plans created with today's modern lifestyle in mind



Scan for more plans online

CONTACT US



(813) 551-3500



info@costamaison.com